



23 Bisley Place, WAKERLEY QLD 4154

House: 5 beds 2 baths 2 park



## SOLD by BEN VENNER

UNDER CONTRACT

This house will be the easiest transition you ever make. All you have to do is move in, put your feet up and relax in your new little slice of paradise. In a beautiful location surrounded by a smattering of quaint little parks this perfect piece of suburbia is the complete package for any growing family.

This home is perfectly designed for everyday entertaining, with an open plan layout allowing the rooms to seamlessly transition from one area to the next. With cleverly calculated architectural structuring and high quality finishes this timeless home has a list of inclusions that really set it apart. Even walking to the front door makes this home feel luxurious with a covered portico surrounded by lush, green foliage running right up to the front door.

Upon opening the beautiful, glass doors you are greeted with 40sqm of outdoor al fresco dining extending straight from the main living area. Stretched out in front of you is a lush expanse of perfectly manicured garden, making it abundantly clear that this house was designed to entertain.

With a choice of five bedrooms there is certainly something to keep every member of the family happy. The Master bedroom is spacious and features a substantial, modern ensuite. Looking for more storage? The backyard comes with a 10sqm shed for all those other bits and pieces that need to be hidden away.

The house also features thoughtful little extras such as Crimsafe security screens and doors, a great three speaker system, Italian porcelain floor tiles, high quality granite bench tops and cost-effective, zoned, ducted air-conditioning throughout. It's the little things like this that prove this house was designed for usability. Going the extra mile in the intricate details is truly what sets this house apart from the rest.



Ben Venner

E:

[benvenner@placenewmarket.com.au](mailto:benvenner@placenewmarket.com.au)

M: 0488 770 411

### Features

- Air Conditioning
- Security System
- Built-In Wardrobes
- Formal Lounge
- Garden
- Secure Parking
- Separate Dining
- Terrace/Balcony



23 Bisley Place, WAKERLEY QLD 4154

House: 5 beds 2 baths 2 park

With two separate lounge areas this home never feels cramped, instead allowing the family to spread out through the various zones and find their own space. This house is the perfect mix of metropolitan and suburbia. Located in a desirable little property pocket this house is conveniently close to shops, parks and schools allowing the buyer to cater for an extended family while still enjoying the beautiful, fresh bay breezes. And at only 15km to the city it's easy to see why this suburb is so appealing

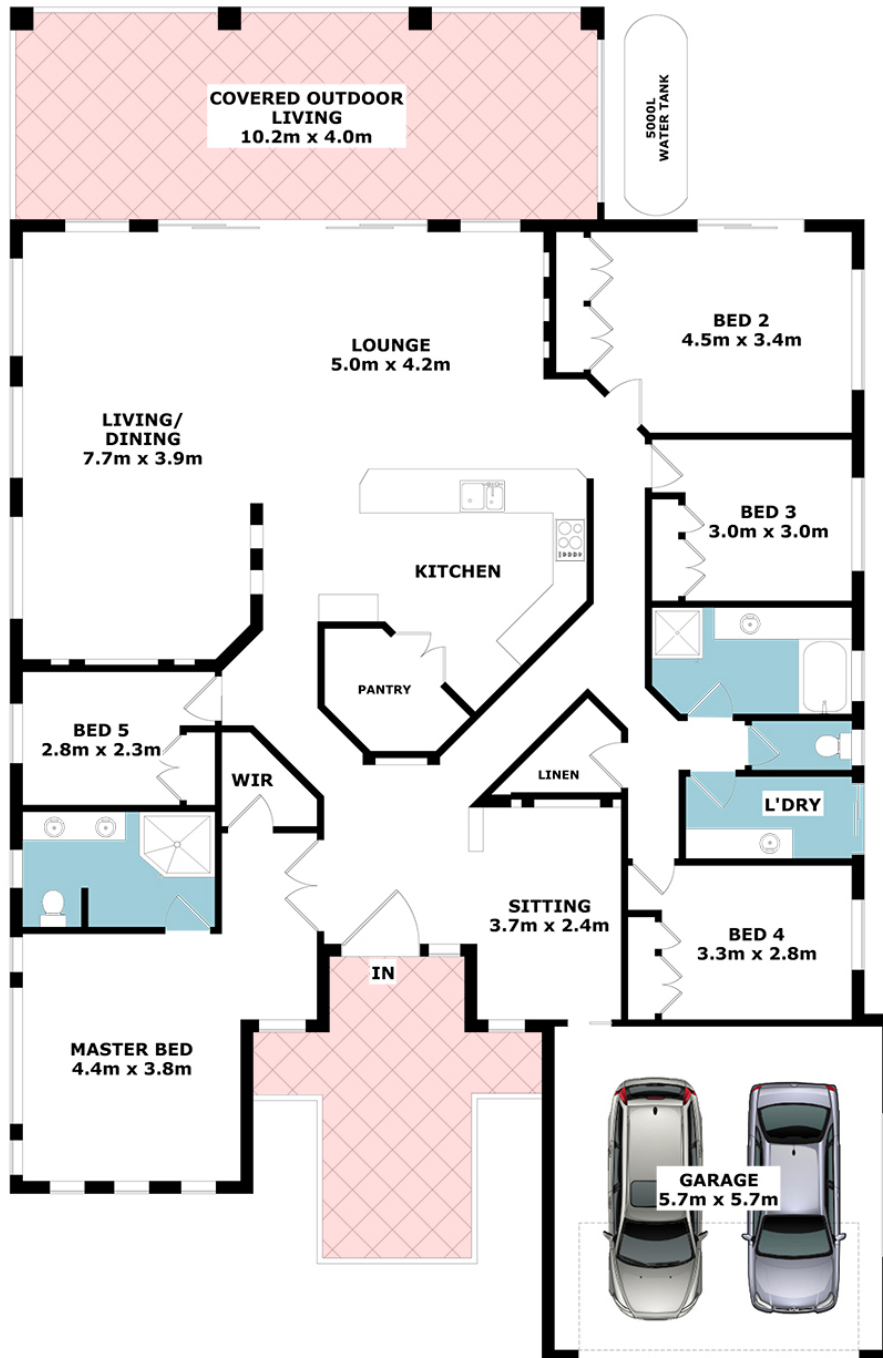
So don't wait, debate or deliberate now is the time to contact us regarding your new Place.

**\*\*This property is being sold without a price and therefore a price guide cannot be provided. The website may have filtered the property into a price bracket for website functionality purposes\*\***



23 Bisley Place, WAKERLEY QLD 4154

House: 5 beds 2 baths 2 park



APPROX GROSS INTERNAL AREA 244 sqm

APPROX GROSS TOTAL AREA 304 sqm

Copyright © www.primepixels.com.au

Whilst every attempt has been made to ensure the accuracy of the floor plans contained here, measurements of doors, windows, rooms and any other items are approximate and no responsibility is taken for any error, omission or misstatement. These plans are for representation purposes only.



23 BISLEY PLACE, WAKERLEY

Property No. 9335081



23 Bisley Place, WAKERLEY QLD 4154

House: 5 beds 2 baths 2 park

