



605/8 Skyring Terrace, TENERIFFE QLD 4005

Apartment: 2 beds 2 baths 2 park



2 level Woolstore Living with City and River Views

SOLD

Here is your opportunity to secure this beautiful, 2 level Woolstore apartment positioned in the iconic heritage listed 'W4 Apartments', this stunning home is within easy walking distance to everything amazing that Teneriffe has to offer.

Featuring an open plan living space, which seamlessly flows through to the private balcony capturing the stunning city views and boasting an ease of living across two levels.

Architecturally designed with space and comfort in mind and situated in the heart of Teneriffe, this spacious apartment is in easy walking distance to cafes, restaurants, shopping, CityCat and bus routes that can take you to Brisbane's CBD in no time, Gasworks precinct and situated on the picturesque Brisbane River.

With design and flow of living at the fore front, this apartment also features timber stairs, ducted air-conditioning and stunning city and Brisbane River views throughout.

Other features include:

- 2 bed 2 bath 2 cars
- Master bedroom with ensuite and river views
- Modern kitchen with Bosch appliances
- Private balcony overlooking the city
- Ample storage
- Open plan lounge and dining
- Quality finishes throughout
- Ducted air-conditioning
- Large bedrooms with built-ins
- Beautiful river breezes all year round



Danny Cody
Lead Agent

E: dannycody@placerealestate.com.au
M: 0404 077 102



Matthew Jabs
Lead Agent

E: matthewjabs@eplace.com.au
M: 0422 294 272



605/8 Skyring Terrace, TENERIFFE QLD 4005

Apartment: 2 beds 2 baths 2 park

- Indoor lap pool and gymnasium
- Study
- Timber stairs
- Secure parking
- Pet friendly subject to body corp approval
- Body Corp fees \$5,348.44 per annum
- Currently Tenanted until 02/08/22 for \$650 per week

The masterful conversion of the W4 Woolstore has retained its original architecture, the common areas centering around a light-filled atrium, where exposed brickwork, timber beams and the sawtooth roofline remain intact. Residents enjoy access to superb onsite facilities, including an 18-meter lap pool and fully equipped gymnasium, with the added convenience of onsite management.

Located within the highly desired, inner-city suburb of Teneriffe, this lifestyle-oriented residence is just moments from the Gasworks and James Street entertainment precincts and is surrounded by bustling cafes and riverside restaurants. An easy commute awaits city-dwellers, with Brisbane CBD just 3 kilometers away, directly accessible via bus or ferry.

This apartment is perfect for anyone looking for that inner city sanctum or that strong performing investment in one of Brisbane's premier locations!

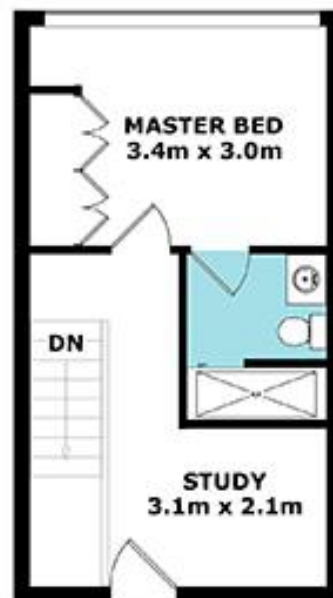
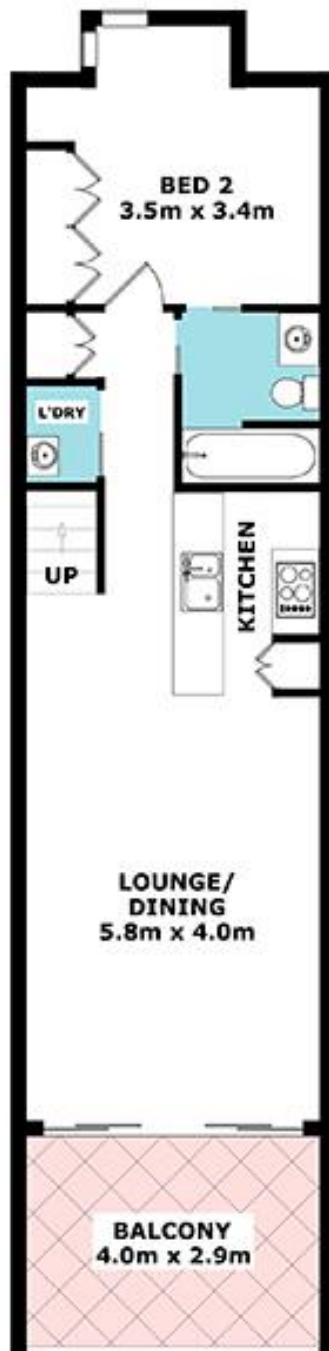
Quality living like this is hard to come by, so if you are after that unique Woolstore feel than look no further. A must see for Teneriffe apartment buyers so don't delay, book your inspection now!

For more information or to book your inspection please call Danny Cody.



605/8 Skyring Terrace, TENERIFFE QLD 4005

Apartment: 2 beds 2 baths 2 park



LOWER LEVEL

UPPER LEVEL

APPROX GROSS INTERNAL AREA 104 sqm

APPROX GROSS TOTAL AREA 115 sqm

Copyright © www.primepixels.com.au

Whilst every attempt has been made to ensure the accuracy of the floor plans contained here, measurements of doors, windows, rooms and any other items are approximate and no responsibility is taken for any error, omission or misstatement. These plans are for representation purposes only.



605/16 SKYRING TCE, TENERIFFE

Property No. L14795867



605/8 Skyring Terrace, TENERIFFE QLD 4005

Apartment: 2 beds 2 baths 2 park

