



4/42 Garden Terrace, NEWMARKET QLD 4051

Unit: 2 beds 1 baths 1 park



LEASED

Contact Agent

Appealing inner city apartment living is offered in this private block. Located in the quiet street of Garden Terrace close to parklands, transport, schools, shops, cafs and major arterial roads this property presents a location sensation.

FEATURES INCLUDE:

- 2 Large Bedrooms
- Breezy Rear Balcony
- Single Lock Up Garage on ground level
- Spacious kitchen with gas cooking
- Open living area

FEATURES WE LOVE:

- Air conditioning
- Communal grassed area
- Plenty of kitchen cupboard space
- Elevated top level unit
- Gorgeous city views

This fabulous unit is situated less than 5 km's to the CBD and provides an exceptionally convenient inner city lifestyle.

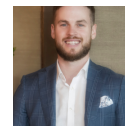
Make this your next Place to call home.

****SORRY, NO PETS****



Isaiah Ashwell
Asset Growth Manager

E: irm3@placerealestate.com.au
M: 0422 674 442



Shane Hurley
Business Development
Manager

E:
shanehurley@placerealestate.com.au
M: 0401 254 496

Features

- Built-In Wardrobes
- Close to Shops
- Close to Transport
- Secure Parking
- Terrace/Balcony



4/42 Garden Terrace, NEWMARKET QLD 4051

Unit: 2 beds 1 baths 1 park

